



**3 Bed
Flat - Purpose Built
located in**

£2,900 Per month



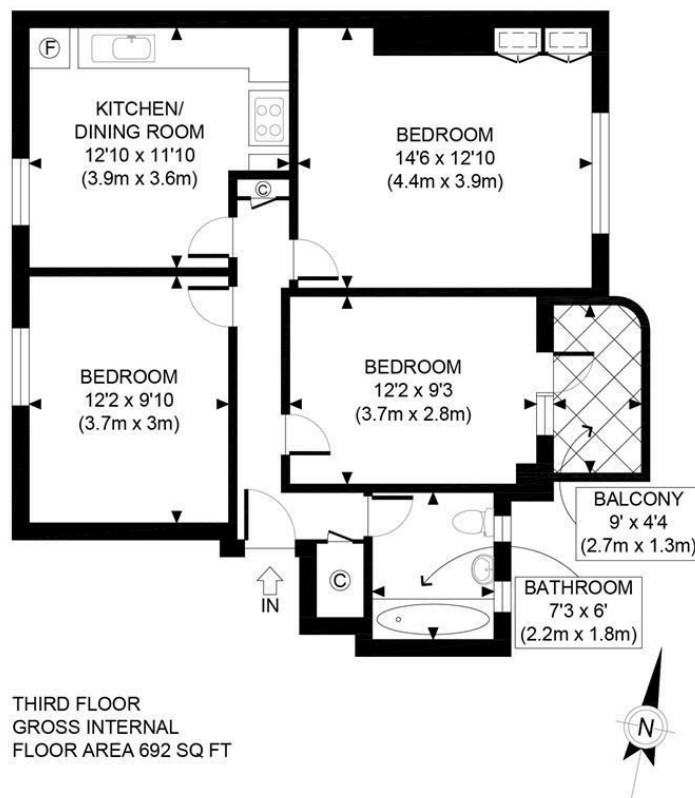
**WATERBRIDGE
ESTATES**

DIRECTIONS

CONTACT

12, Suite 3 Portman Close
London
W1H 6BR

E: info@waterb.com
T: 02074871355



APPROX. GROSS INTERNAL FLOOR AREA 692 SQ FT / 64 SQM

Disclaimer: Floor plan measurements are approximate and are for illustrative purposes only. While we do not doubt the floor plan accuracy and completeness, you or your advisors should conduct a careful, independent investigation of the property in respect of monetary valuation

Treaty St

date 25/11/25

photoplan

